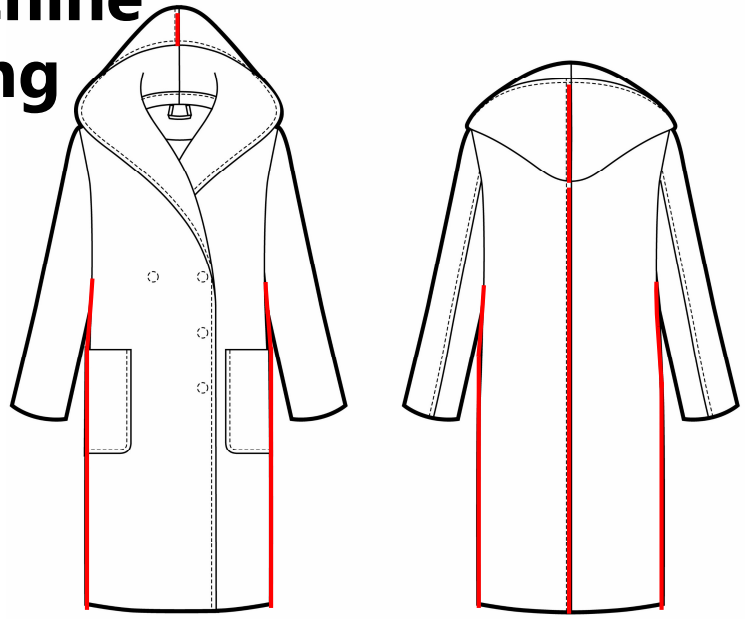


## Double face sewing machine for Welt stitching



**Using this model,  
your sewing just like a craftsman.**

Till now the double face sewing for welt stitching is often sewn by hand or zigzag stitch sewing machine, but it always takes a lot of time and the stitches are visible.

With this model, though it is sewing with a sewing machine, the thread is hard to see and the stitch marks are inconspicuous, it is like a craftsman sewing.

Sample view from above



Sample view from side



When the colors of thread and clothes are **same**.  
(White thread)

When the colors of thread and clothes are **different**.  
(Black thread)



If you have any questions or you need the samples, please feel free to let us know.  
Now we have the machine in our company showroom, if you want to try the machine, welcome to our office.