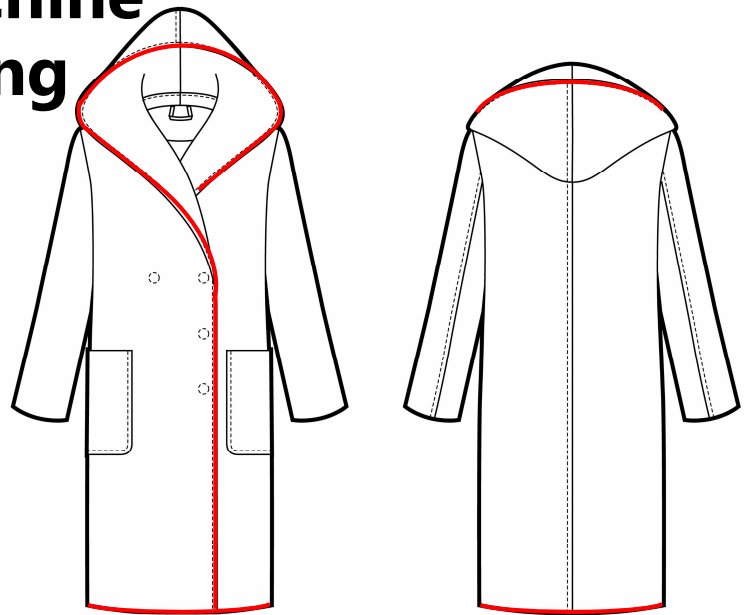


Double face sewing machine for Edge stitching



**The sewing just looks like the hand-finished,
but it's made by the machine.**

Till now the double face sewing for Edge stitching has been a long time-consuming task due to the sewing by hand.

With this model, the work can be done with a sewing machine, and the sewing looks like the blind stitch by hand.

When the colors of thread and clothes are **same**.
(White thread)



When the colors of thread and clothes are **different**.
(Black thread)



※Before the sewing, it is necessary to fold the edge of the fabric in half by double sided tape.

If you have any questions or you need the samples, please feel free to let us know.

Now we have the machine in our company showroom, if you want to try the machine, welcome to our office.